

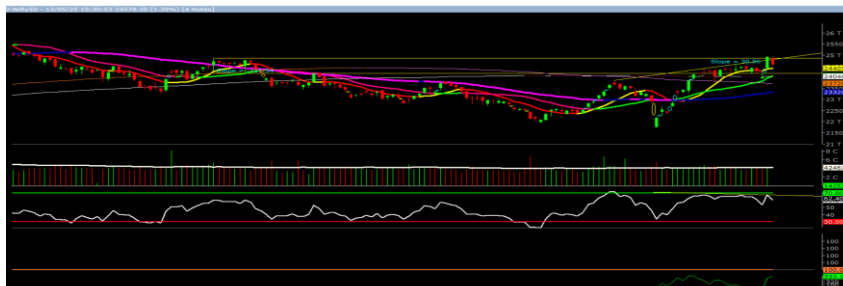
Wednesday, 13th May 2025

Indian Indices	Last Price	(%) Chg
NSE	24578.35	-1.39
BSE	81148.22	-1.55
World Indices	Last Price	(%) Chg
Dow Jones	42140.43	-0.64
Nasdaq	19010.08	1.61
Nikkei	37874.59	-0.81
Hang Seng	23414.31	1.32
FTSE	8602.92	-0.02
Commodity	Last Price	(%) Chg
GOLD(\$/ounce)	3233.42	-0.43
Silver (\$/Ounce)	32.80	-0.90
Crude (\$/BBL)	63.23	-0.64
Aluminium spot (\$/mt)	2490.95	0.81
Copper SPOT (\$/mt)	9578.80	-0.31
Zinc (\$/MT)	2717.05	0.02
Natural gas \$/MMBtu	3.60	-0.44
Currency	Last Price	(%) Chg
USDINR	85.04	-0.24
EURINR	95.18	-0.24
Bond		
India 10 Yr Bond yield	6.38	0.17

52 Wk High			52 Wk Low		
Company	Close Price	52 Wk High	Company	Close Price	52 Wk Low
APLAPOLLO	1725	1747	--	--	--
BHARTIHEXA	1704	1778	--	--	--
CUB	190	191	--	--	--
DALBHARAT	2009	2020	--	--	--
REDINGTON	272	281	--	--	--

Source: Money Control (BSE 500)

Market Technical Outlook



The Nifty index opened on a weak note and traded with a negative bias throughout the day, eventually closing in the red. On the daily chart, a bearish candle has formed following a prominent bullish candle, coupled with a negative divergence in the RSI indicator. This development indicates a degree of caution at current levels. In the upcoming session, if the index trades below the 24,530 mark, it may extend its test 24,460–24,358 levels. On the upside, resistance is likely around 24,666–24,750 levels.

Despite today's pullback, the index continues to trade well above its key short-term moving averages the 10-day and 20-day SMAs at 24,405 and 24,090, respectively and remains firmly above the 200-day SMA at 24,045. This alignment suggests that the broader trend remains positive. However, the ongoing negative divergence in the RSI warrants a cautiously optimistic approach in the near term.

Foreign Institutional Investments (FII's) Activities

Name of Segment	Net Buyer/seller	Rs In Cr
Index Futures	Net Seller	-6668.28
Stock Futures	Net Seller	-7240.31
Net Future Position	Net Seller	-13908.59
Index Options	Net Seller	-13234.96
Stock Options	Net Seller	-3015.67
Net Options Position	Net Seller	-16250.63
FII In cash Segment	Net Seller	-476.86
DII In cash Segment	Net Buyer	4273.80
Net Cash Position	Net Buyer	3796.94

Guru Call: From the expert's desk

Company	Reco Date	Reco Price (Buy on dips)	High till date	Return%
Adani Power	20-Apr-22	235	345	46.6%
Adani Wilmar Ltd	20-Apr-22	668	878	31.5%
Aditya Birla Capital Ltd	13-Aug-21	124	139	12.5%
Aditya Birla Fashion and Retail Ltd	8-Feb-21	164	322	95.9%
Apcotex Industries Limited	13-Aug-21	343	679	98.0%
Asian Paints Ltd.	30-Mar-17	1068	3590	236.1%
Avenue Supermarts Ltd.	31-Jul-17	899	5900	556.6%
Axis Bank Ltd.	10-Apr-18	519	867	67.0%
Bajaj Finance Ltd	20-Apr-22	7033	7295	3.7%
Bajaj Finserv Ltd	1-Nov-16	3417	19325	465.6%
Bajaj Holdings And Investment Ltd	19-May-16	1499	6598	340.1%
CDSL	17-Sep-20	486	1734	256.9%
Chola finance	25-Sep-20	239	770	222.6%
Chola Holding	23-Sep-20	392	763	94.7%
Cipla Ltd	20-Mar-17	597	1083	81.3%
Colgate Palmolive	16-Sep-19	1314	1823	38.7%
D. P. Abhushan Ltd	20-Apr-22	396	495	25.0%
Dabur India	22-Oct-19	466	659	41.4%
DLF Ltd	10-Apr-19	194	450	131.6%
Dr Reddy	4-Aug-20	4530	5615	24.0%
Emami Limited	26-Jun-19	290	622	114.2%
Finolex Cables Ltd	8-Feb-21	130	268	106.2%
Fortis	14-Jul-20	127	314	147.2%
Godawari Power	20-Apr-22	455	482	6.0%
Godrej Consumer Products Limited	16-Jun-20	634	1138	79.5%
HDFC Asset Management Company Ltd.	19-Dec-18	1573	3844	144.4%
HDFC Bank Limited	10-Nov-16	639	1725	170.0%
HDFC Life Insurance Co Ltd	19-Jan-18	485	776	60.0%
Heritage Foods Ltd	20-Apr-22	330	354	7.2%
Hero Motocorp Ltd	29-Sep-20	3175	3629	14.3%
Hindustan Unilever Ltd.	13-Nov-17	1291	2859	121.5%
Housing Development Finance Corp Ltd	19-Dec-17	1720	3365	95.6%
ICICI Bank Ltd.	6-Apr-18	279	867	211.1%
ICICI Lombard General Insurance	19-Sep-19	1155	1675	45.0%
ICICI Prudential Life Insurance Company Ltd.	28-Jun-18	376	724	92.7%
ICICI Securities Ltd	24-Sep-20	467	896	92.0%
Indusindbnk	8-Jun-20	451	1242	175.4%
Infosys Ltd.	17-Aug-17	488	1954	300.7%
Kotak Mahindra Bank Ltd	10-Nov-16	822	2253	174.1%
Linde India	20-Apr-22	3499	3649	4.3%
Marico Ltd.	4-Apr-18	325	608	87.1%
Maruti Suzuki India Ltd	13-Aug-20	5989	9050	51.1%
Oberoi Realty Ltd.	23-Nov-17	509	1052	106.8%
PEL	2-Sep-20	1246	3015	141.9%
Phoenix Mills Limited	7-Jul-19	655	1200	83.2%
Poonawalla Fincorp Ltd	13-Aug-21	175	344	96.1%
Procter & Gamble Hygiene & Health Care	13-Aug-21	12870	16466	27.9%
Raymond	25-Sep-20	264	1280	385.7%
Reliance	22-Apr-20	1351	2856	111.4%
SBI Life	20-May-20	715	1293	80.8%
Shree Renuka Sugars Limited	13-Aug-21	27	63	135.1%
Spectrum Electrical	18-Apr-22	98	103	5.0%

Guru Call: From the expert's desk

Company	Reco Date	Reco Price (Buy on dips)	High till date	Return%
State Bank of India	3-Feb-21	336	549	63.4%
Sun Pharma	7-Aug-20	525	967	84.2%
Sun TV Network Ltd.	13-Aug-21	525	612	16.5%
Tata Chemicals Limited	24-Dec-19	297	1158	290.0%
Tata Consultancy Services Ltd.	8-Jan-18	1345	4046	200.9%
Tata motors	20-Apr-22	441	450	2.0%
Tata motors dvr	20-Apr-22	220	226	2.6%
Tata Power	20-Apr-22	249	260	4.4%
Trent Ltd.	19-Dec-18	348	1347	286.6%
Ultratech Cement Ltd.	19-Dec-18	4085	8269	102.4%
UTI Asset Management Company Ltd	13-Aug-21	1044	1217	16.6%
Vedanta Ltd	28-Jun-21	261	441	69.1%
Voltas Ltd.	27-Mar-18	614	1357	121.0%
Whirlpool Of India Ltd.	7-Dec-16	872	2550	192.3%
Wipro Limited	13-Aug-21	616	740	20.2%

NIFTY 50 STOCKS BELOW 200SMA

SCRIP NAME	SMA 200	CLOSING (13-05-2025)
INFY	1802.63	1568.6
WIPRO	276.78	251.57
ITC	444.47	427.9
HCLTECH	1730.4	1619.6
HINDUNILVR	2505.32	2360
DRREDDY	1265.87	1207.1
TATAMOTORS	819.33	707.7
ADANIENT	2627.06	2441.2
HINDALCO	652.74	634.75
HEROMOTOCO	4598.37	4063.6
SUNPHARMA	1779.73	1700
ASIANPAINT	2629.96	2324.6
ONGC	267.17	241.16
TRENT	6277.96	5326.5
INDUSINDBK	1078.92	770.1
POWERGRID	312.53	298.45
TCS	4038.42	3515
TECHM	1603.1	1572.5
NTPC	367.93	341.5
BAJAJ-AUTO	9320.51	8063
COALINDIA	430.11	395.15
ETERNAL	248.89	231.65
JIOFIN	292	267.4
--	--	--
--	--	--
--	--	--
--	--	--
--	--	--
--	--	--
--	--	--
--	--	--
--	--	--
--	--	--
--	--	--

Weekly Expiry Most Active Nifty Call Option

Symbol	Expiry Date	Strike Price	Highest Open Interest (Contracts)
NIFTY	15-May-2025	26,000	1,84,958
NIFTY	15-May-2025	25,000	1,72,864
NIFTY	15-May-2025	25,500	1,53,939

Weekly Expiry Most Active Nifty Put Option

Symbol	Expiry Date	Strike Price	Highest Open Interest (Contracts)
NIFTY	15-May-2025	24,000	1,27,557
NIFTY	15-May-2025	23,500	1,11,031
NIFTY	15-May-2025	20,650	1,01,464

Securities in Ban For Trade Date: 14-05-2025

CDSL, MANAPPURAM

Bulk Deals (BSE)

Deal Date	Scrip Name	Client Name	Deal Type	Quantity	Price
13-May-25	PAYTM	GOLDMAN SACHS (SINGAPORE) PTE.- ODI	BUY	3,735,000	823.1
13-May-25	PAYTM	ANTFIN NETHERLANDS HOLDING BV	SELL	12,755,045	826.04
13-May-25	PAYTM	ANTFIN (NETHERLANDS) HOLDING B.V.	SELL	12,755,045	823.30
13-May-25	PBAINFRA	EMINENCE GLOBAL FUND PCC- EUBILIA CAPITAL PARTNERS FUND I	BUY	90000	12.45

Bulk Deals (NSE)

Deal Date	Scrip Name	Client Name	Deal Type	Quantity	Price
13-May-25	KFINTECH	SOCIETE GENERALE	BUY	3447285	1040
13-May-25	KFINTECH	KOTAK MAHINDRA MUTUAL FUND	BUY	1932367	1040
13-May-25	KFINTECH	COPTHALL MAURITIUS INVESTMENT LIMITED	BUY	944185	1040.66
13-May-25	GENSOL	NOVA GLOBAL OPPORTUNITIES FUND PCC - BLUESTONE	SELL	206754	51.25
13-May-25	KFINTECH	GENERAL ATLANTIC SINGAPORE FUND PTE LTD	SELL	8600000	1040.31
13-May-25	KFINTECH	GENERAL ATLANTIC SINGAPORE FUND PTE LTD	SELL	8600000	1041.56

Note- Executed on 13th May 2025. Bulk Deal Buy/Sell done by fund house is considered.

Research Analyst Registration No.

INH000002764

Contact

SMS: 'Arihant' to 56677

Website

www.arihantcapital.com

mail Id

arihant.research@arihantcapital.com

**Arihant is Forbes Asia's '200 Best under a \$Billion' Company
'Best Emerging Commodities Broker' awarded by UTV Bloomberg**

Disclaimer: This document has been prepared by Arihant Capital Markets Limited (hereinafter called as Arihant) and its subsidiaries and associated companies. This document does not constitute an offer or solicitation for the purchase and sale of any financial instrument by Arihant. Receipt and review of this document constitutes your agreement not to circulate, redistribute, retransmit or disclose to others the contents, opinions, conclusion, or information contained herein. This document has been prepared and issued on the basis of publicly available information, internally developed data and other sources believed to be reliable. Whilst meticulous care has been taken to ensure that the facts stated are accurate and opinions given are fair and reasonable, neither the analyst nor any employee of our company is in any way is responsible for its contents and nor is its accuracy or completeness guaranteed. This document is prepared for assistance only and is not intended to be and must not alone be taken as the basis for an investment decision. All recipients of this material should before dealing and or transacting in any of the products referred to in this material make their own investigation, seek appropriate professional advice. The investments discussed in this material may not be suitable for all investors. The recipient alone shall be fully responsible/are liable for any decision taken on the basis of this material. Arihant Capital Markets Ltd (including its affiliates) or its officers, directors, personnel and employees, including persons involved in the preparation or issuance of this material may; (a) from time to time, have positions in, and buy or sell or (b) be engaged in any other transaction and earn brokerage or other compensation in the financial instruments/products discussed herein or act as advisor or lender/borrower in respect of such securities/financial instruments/products or have other potential conflict of interest with respect to any recommendation and related information and opinions. The said persons may have acted upon and/or in a manner contradictory with the information contained here and may have a position or be otherwise interested in the investment referred to in this document before its publication. The user of this report assumes the entire risk of any use made of this data/report. Arihant especially states that it has no financial liability, whatsoever, to the users of this report.

Arihant Capital Markets Ltd

#1011 Solitaire Corporate Park Building No.10 1st Floor
Andheri Ghatkopar Link Road Chakala Andheri (E) Mumbai-400093
T. 022-42254800. Fax: 022-42254880
www.arihantcapital.com