

Key developments during the week

- India Sep industrial growth falls to 4-month low of 3.6% from 6.4% in Aug
- Panel set up under Jaitley to oversee national invest fund operations
- UK energy companies commit about 4 bln pound sterling investment in India
- India, UK sign healthcare deals worth over 1 bln pound sterling
- Vodafone to invest 130 bln rupees in India for capacity addition
- TRAI says call drop penalty to cost companies less than 2 bln rupees per quarter
- IRDAI issues draft norms for Lloyd's UK to set up India office
- SBI, London Stock Exchange Group to launch bond indices in 2016
- Govt announces major FDI reforms, removes conditions in many sectors
- India October passenger car sales up 21.8% year on year
- OECD sees world economic growth down at 2.9% in 2015, India at 7.2% in FY16
- Govt cuts gold base import price to \$354/10 gm vs \$373/10 gm
- Power minister says plan to implement discoms revival plan in 4-5 months
- India, ADB in \$273 mln loan pact for rural roads project in 5 states
- Finance minister source says decision on small savings rate cut in 2-3 weeks
- Jaitley says finances stressed, but can't cut expenditure

INDEX	13-Nov-15	06-Nov-15	Change (in %)
NIFTY	7762.25	7954.30	-2.41
SENSEX	25610.53	26265.24	-2.49
NSE 500	6526.60	6650.10	-1.86
NSE MIDCAP	3220.10	3210.50	0.30
NIFTY JUNIOR	19268.90	19561.75	-1.50
BSE SMALLCAP	11125.44	11052.33	0.66
BSE 200	3287.35	3355.39	-2.03

INDEX	13-Nov-15	06-Nov-15	Change (in %)
BSE AUTO	18305.54	18264.27	0.23
BSE BANK	19362.30	19496.56	-0.69
BSE CAPITAL GOODS	14178.94	14535.94	-2.46
BSE CD	12039.04	11767.34	2.31
BSE FMCG	7770.06	7869.56	-1.26
BSE HEALTHCARE	16345.62	16970.39	-3.68
BSE IT	10923.16	11279.58	-3.16
BSE METALS	7064.14	7153.74	-1.25
BSE OIL AND GAS	8782.65	9108.93	-3.58
BSE PSU	6682.10	6844.39	-2.37
BSE REALTY	1294.13	1345.08	-3.79
BSE TECK	5893.96	6096.07	-3.32

INDEX	13-Nov-15	06-Nov-15	Change (in %)
DOW JONES	17245.24	17910.33	-3.71
HANG SENG	22396.14	22867.33	-2.06
NIKKEI	19596.91	19265.60	1.72
FTSE	6118.28	6353.83	-3.71

Domestic events week ahead

- Nov 16:** WPI inflation for October, by commerce and industry ministry.
- Nov 16-17:** Trade data for October, by commerce and industry ministry.
- Nov 16-20:** GSM mobile subscribers' data for October, by COAI.
- Nov 16-20:** Crude, refinery output for October, from petroleum ministry.
- Nov 20:** CPI for rural and farm labourers for October, by Labour Bureau.

Source: Cagencies

Global events week ahead

- Nov 16:** Japan GDP, Europe CPI, ECB President Draghi Speaks, US Empire State Manufacturing Index
- Nov 17:** Italian Trade Balance, UK CPI, UK PPI, German ZEW Economic Sentiment, Europe ZEW Economic Sentiment, US CPI, US Core CPI, US Industrial Production
- Nov 18:** US FOMC Member Lockhart Speaks, US Building Permits, US Housing Starts, US Crude Oil Inventories, US FOMC Meeting Minutes
- Nov 19:** Japan Trade Balance, Japan Monetary Policy, German Buba President Weidmann Speaks, Europe Current Account, UK Retail Sales, ECB Monetary Policy Meeting Accounts, US Unemployment Claims, US Philly Fed Manufacturing Index, US FOMC Member Lockhart Speaks
- Nov 20:** BOJ Monthly Report, German PPI, ECB President Draghi Speaks, German Buba President Weidmann Speaks, Europe Consumer Confidence

Market range for the week 7550- 7880

Nifty	Values
Support 1	7720
Support 2	7650
Support 3	7580
Resistance 1	7780
Resistance 2	7850
Resistance 3	7880

Resistance – Nifty may face resistance at 7780 level above this level it may go up to 7850-7880 level.

Support - Nifty has support at 7720 level below this next support at 7650-7580 levels.

Technical – During the week, CNX Nifty opened at 7788.25 and touched the highest level of 7937.75 and lowest level of 7730.90. The CNX Nifty ended at 7762.25; drag 192.05 points or 2.41%. The S&P BSE Sensex opened at 25809.00 and touched the highest level of 26193.17 and lowest level of 25540.70. The S&P BSE Sensex closed at 25610.53; drag 654.71 points or 2.49%.

For the coming week, we expect the market range of 7550-7880.

Weekly Chart View –

We had mentioned in last week's report that on the daily chart Nifty below 100 and 50DMA and on weekly chart we witnessed "Bearish candle", because of that we had mentioned below 7920-7900 we can see more pressure and all we have seen same. Now on daily chart we can see "Doji" candle at lower levels and on weekly chart Nifty below 100WMA. So overall from here we can see more pressure below 7720-7680 and unless we did not get close above 8050-8080 we can see pressure at higher level.

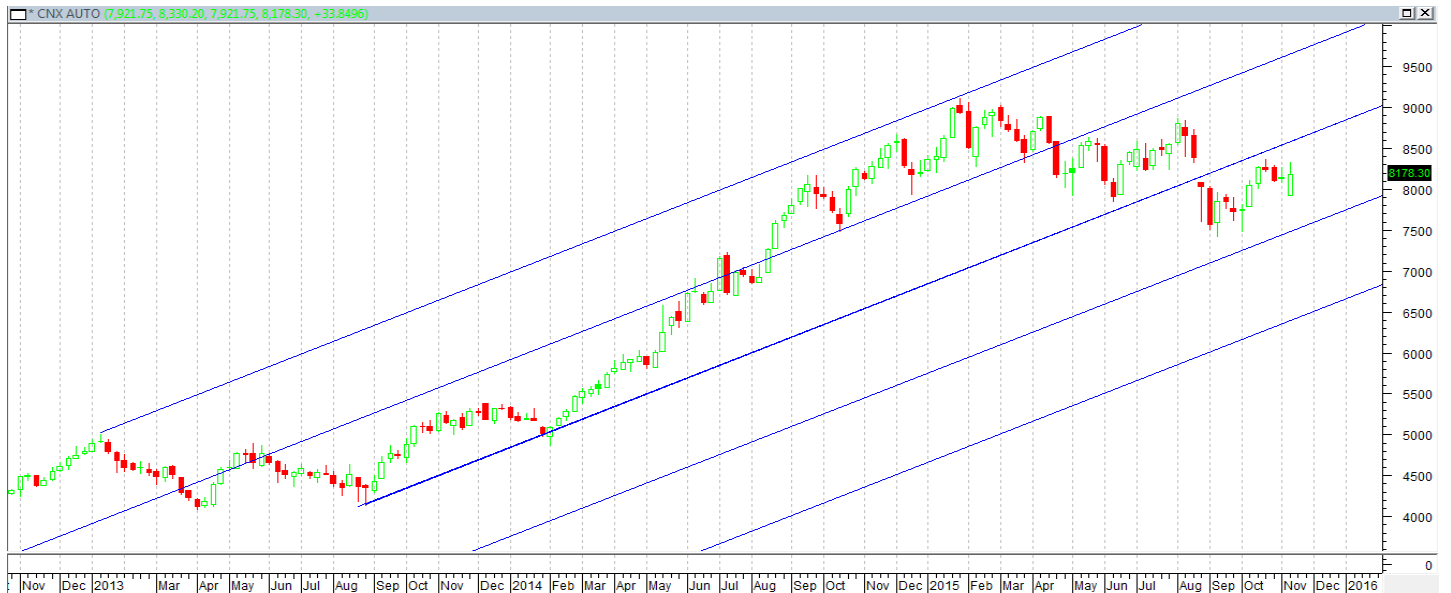
Weekly Chart



Weekly Sectoral Technical Outlook

NSE Auto Index

CMP: 8178

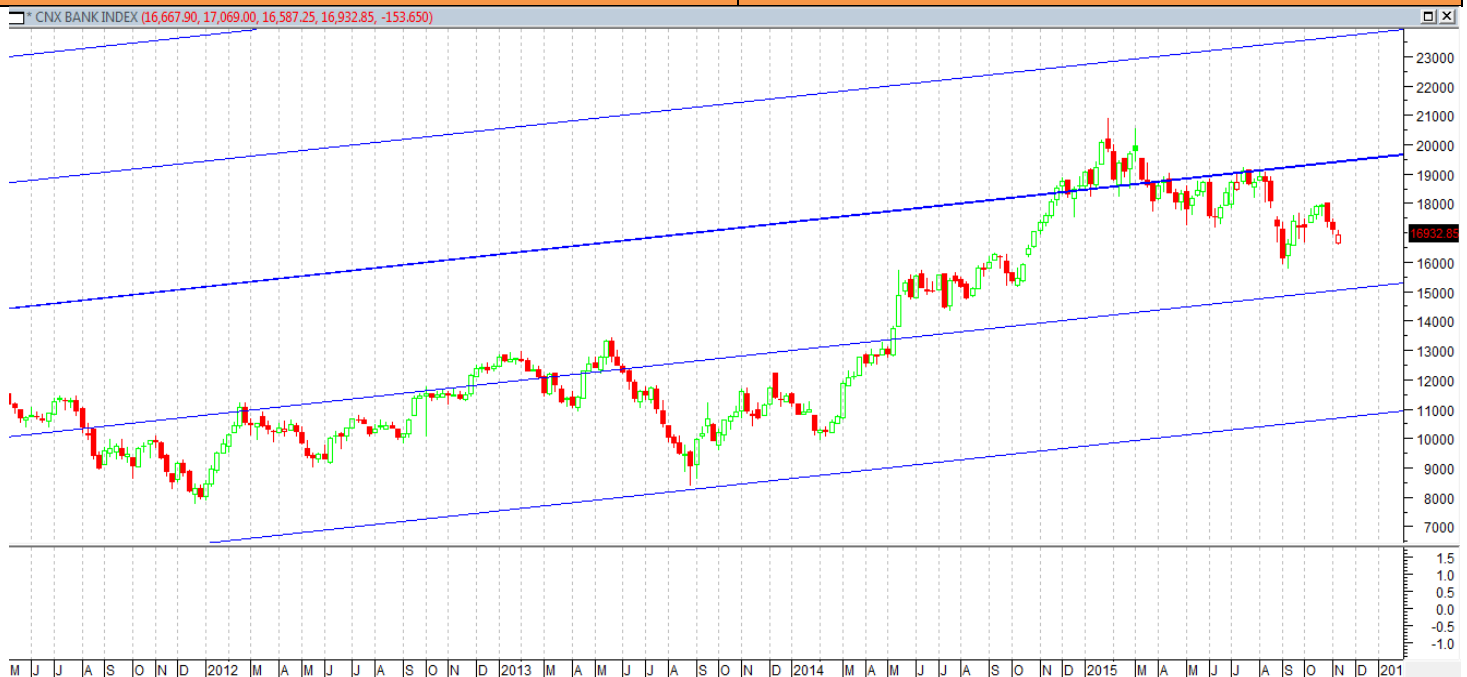


NSE Auto

At present we are observing a positive candle, however there is no clear pattern emerging to go long in this sector. Hence one should avoid this sector.

NSE Bankex

CMP: 16932



NSE Bankex

We still maintain bearish view on this sector. If this sector trades below 16580 then it can test 16000 – 15700 levels. Hence one should avoid this sector at present.

NSE Metal Index

CMP: 1704



NSE Metal Index

We maintain our bearish stance on the sector as on the downside it is likely to test 1600 - 1550 levels. Hence, one should avoid this sector at present.

NSE IT

CMP: 11102



NSE IT

At present we are observing a bear candle which suggests weakness. On the downside if this sector trades below 11027 then it can test 10950 – 10500 levels. Hence one should avoid this sector.

Weekly Technicals of Key Companies –

Company	Closing 13-Nov-15	Buy/Sell Trigger	Resistance 1	Resistance 2	Support 1	Support 2
ACC	1326.70	1336.95	1363.55	1400.4	1300.10	1273.5
ADANI PORTS	267.35	270.82	280.03	292.72	258.13	248.92
AMBUJACEM	192.65	197.25	203.00	213.35	186.9	181.15
ASIANPAINT	800.40	801.02	817.78	835.17	783.63	766.87
AXISBANK	484.95	472.68	499.47	513.98	458.17	431.38
BAJAJ-AUTO	2380.45	2407.5	2447.95	2515.45	2340	2299.55
BANKBARODA	174.20	170.42	179.13	184.07	165.48	156.77
BHARTIARTL	333.90	331.08	341.42	348.93	323.57	313.23
BHEL	177.95	181.53	186.42	194.88	173.07	168.18
BOSCHLTD	18986.80	19090.12	19416.18	19845.57	18660.73	18334.67
BPCL	906.05	896.43	920.87	935.68	881.62	857.18
CAIRN	130.70	136.88	143.77	156.83	123.82	116.93
CIPLA	617.90	627.57	640.03	662.17	605.43	592.97
COALINDIA	337.70	334.23	344.97	352.23	326.97	316.23
DRREDDY	3389.60	3405.93	3558.67	3727.73	3236.87	3084.13
GAIL	282.00	282.72	289.28	296.57	275.43	268.87
GRASIM	3623.05	3613.6	3671.45	3719.85	3565.2	3507.35
HCLTECH	843.40	850.53	877.87	912.33	816.07	788.73
HDFC	1178.75	1179.87	1202.18	1225.62	1156.43	1134.12
HDFCBANK	1052.05	1054.23	1067.47	1082.88	1038.82	1025.58
HEROMOTOCO	2615.40	2630.32	2664.53	2713.67	2581.18	2546.97
HINDALCO	77.40	79.10	81.10	84.80	75.40	73.40
HINDUNILVR	796.70	796.87	809.73	822.77	783.83	770.97
ICICIBANK	261.75	261.38	266.77	271.78	256.37	250.98
IDEA	130.05	131.25	135.65	141.25	125.65	121.25
INDUSINDBK	892.25	899.28	918.57	944.88	872.97	853.68
INFY	1100.80	1110.27	1130.53	1160.27	1080.53	1060.27
ITC	329.80	333.98	340.87	351.93	322.92	316.03
KOTAKBANK	669.60	659.37	684.08	698.57	644.88	620.17
LT	1331.20	1343.37	1356.73	1382.27	1317.83	1304.47
LUPIN	1777.80	1807.17	1854.33	1930.87	1730.63	1683.47
M&M	1251.40	1246.93	1279.32	1307.23	1219.02	1186.63
MARUTI	4619.80	4605.63	4771.27	4922.73	4454.17	4288.53
NTPC	130.80	131.78	133.77	136.73	128.82	126.83
ONGC	228.90	235.97	243.93	258.97	220.93	212.97
PNB	136.85	134.47	140.18	143.52	131.13	125.42
POWERGRID	130.20	129.42	132.18	134.17	127.43	124.67
RELIANCE	933.05	937.52	960.53	988.02	910.03	887.02
SBIN	240.25	241.38	247.17	254.08	234.47	228.68
SUNPHARMA	740.60	745.5	766.95	793.3	719.15	697.7
TATAMOTORS	403.95	398.17	423.28	442.62	378.83	353.72
TATAPOWER	68.30	68.05	70.05	71.80	66.30	64.30
TATASTEEL	222.65	219.90	227.15	231.65	215.4	208.15
TCS	2397.40	2428.90	2471.25	2545.1	2355.05	2312.70
TECHM	520.05	524.30	530.6	541.15	513.75	507.45
ULTRACEMCO	2680.70	2706.30	2751.4	2822.10	2635.6	2590.5
VEDL	87.25	89.68	92.67	98.08	84.27	81.28
WIPRO	551.50	556.30	562.20	572.90	545.6	539.70
YESBANK	738.10	746.60	759.70	781.30	725.00	711.90
ZEEL	377.35	383.83	391.87	406.38	369.32	361.28

Source: Iris Software

**Contact**

SMS: 'Arihant' to 56677

Websitewww.arihantcapital.com**Email Id**research@arihantcapital.com

**Arihant is Forbes Asia's '200 Best under a \$Billion' Company
'Best Emerging Commodities Broker' awarded by UTV Bloomberg**

Disclaimer: This document has been prepared by Arihant Capital Markets Limited (hereinafter called as Arihant) and its subsidiaries and associated companies. This document does not constitute an offer or solicitation for the purchase and sale of any financial instrument by Arihant. Receipt and review of this document constitutes your agreement not to circulate, redistribute, retransmit or disclose to others the contents, opinions, conclusion, or information contained herein. This document has been prepared and issued on the basis of publicly available information, internally developed data and other sources believed to be reliable. Whilst meticulous care has been taken to ensure that the facts stated are accurate and opinions given are fair and reasonable, neither the analyst nor any employee of our company is in any way is responsible for its contents and nor is its accuracy or completeness guaranteed. This document is prepared for assistance only and is not intended to be and must not alone be taken as the basis for an investment decision. All recipients of this material should before dealing and or transacting in any of the products referred to in this material make their own investigation, seek appropriate professional advice. The investments discussed in this material may not be suitable for all investors. The recipient alone shall be fully responsible/are liable for any decision taken on the basis of this material. Arihant Capital Markets Ltd (including its affiliates) or its officers, directors, personnel and employees, including persons involved in the preparation or issuance of this material may; (a) from time to time, have positions in, and buy or sell or (b) be engaged in any other transaction and earn brokerage or other compensation in the financial instruments/products discussed herein or act as advisor or lender/borrower in respect of such securities/financial instruments/products or have other potential conflict of interest with respect to any recommendation and related information and opinions. The said persons may have acted upon and/or in a manner contradictory with the information contained here and may have a position or be otherwise interested in the investment referred to in this document before its publication. The user of this report assumes the entire risk of any use made of this data / Report. Arihant especially states that it has no financial liability, whatsoever, to the users of this Report.

ARIHANT Capital Markets Ltd

#1011, Solitaire Corporate Park, Building No.10, 1st Floor,
Andheri Ghatkopar Link Road, Chakala, Andheri (E), Mumbai-400093
T. 022-42254800. Fax: 022-42254880

www.arihantcapital.com

RCH-WMR-00